



November 12, 2013

MEMORANDUM

To: Campus Planning Committee

From: Christine Taylor Thompson, Planning Associate  
Campus Planning and Real Estate

Subject: **Campus Planning Committee and Design Review Subcommittee Meeting,  
November 18, 2013**

The next meeting of the Campus Planning Committee (CPC) will be held on Monday November 18, 2013 from 10:00-11:30 A.M. in the EMU Fir Room.

**Please visit the project sites before the meeting.** All Campus Planning Committee meetings are open to the public.

**Agenda:**

**1. Tykeson "Luna" Sculpture – Siting**

Background: The purpose of this meeting is to review the proposed site for the Tykeson "Luna" sculpture, which the university has accepted into its permanent sculpture collection. The Campus Planning Committee's role is to determine whether the proposed site is consistent with the *Campus Plan's* policies and patterns.

The proposed location is where the weather station currently is located in Straub Green, facing Straub Hall.

Please review the project description provided as a separate attachment.

Also please review the *Campus Plan* for relevant policies and patterns, in particular:

- Policy 2: Open-space Framework, in particular sub-policies addressing Designated Open Spaces (Straub Green), pathways, and Landscape Features sub-policy (a), pp. 27-34;
- Policy 5: Replacement of Displaced Uses, p. 43;
- Policy 7: Architectural Style and Historic Preservation, pp. 49-52;
- Policy 8: Universal Access, p. 53;
- Policy 11: Patterns, pp. 51-68, particularly patterns related to landscape design such as Activity Nodes, Campus Trees, Path Shape, Paths and Goals, Seat Spots, and Site Repair; and
- Policy 12: Design Area E, Student Services and Academics, particularly Straub Hall Green, p. 98.

Action: The subcommittee will be asked to determine if the proposed location is consistent with the *Campus Plan* and to make a recommendation to the president.

**UNIVERSITY PLANNING OFFICE**

1276 University of Oregon, Eugene OR 97403-1276 T (541) 346-5562 F (541) 346-6197 [www.uoregon.edu/~uplan](http://www.uoregon.edu/~uplan)

## 2. Erb Memorial Union Expansion and Renovation Project – Schematic Design Follow Up

Background: The purpose of this agenda item is to review the proposed schematic design for follow-up items related to the Erb Memorial Union Expansion and Renovation Project.

At its June 12, 2013 meeting the committee approved the schematic design for the Erb Memorial Union Expansion and Renovation Project with the understanding that the following items would come back to the committee for review and action:

1. Refine the design of the covered bike parking facilities.
2. Refine the design of additional built landscape features (e.g. seat walls, stormwater planters, etc.) if any.
3. Carefully consider the design and materials for the Craft Center Courtyard outer fencing to ensure it is not “prison-like” in appearance. Consider materials other than metal mesh that are more consistent with other applications on campus, for example vertical metal fencing (similar to historic applications, e.g., at Dads’ Gates and modern applications, such as at Powell Plaza), particularly for areas in public view.

*Note: The CPC also directed staff to pursue a Campus Plan amendment to establish the new south lawn as a designated open space. This process will take place at a later date.*

Please review the project description provided as a separate attachment.

Also, please review the *Campus Plan* for relevant patterns and policies, in particular:

- Policy 2: Open-space Framework, specifically, Designated Open Spaces and Pathways policy refinements (13th Avenue Axis, Onyx Street Axis, and the Promenade), pp. 27-29; Landscape Features sub-policy (a), p. 34;
- Policy 6: Maintenance and Building Service, pp. 41-42;
- Policy 7: Architectural Style and Historic Preservation, specifically Architectural Style and Campus Character policy refinements, pp 49-50;
- Policy 9: Transportation, pp. 55-56;
- Policy 11: Patterns, including Activity Nodes, Bike Paths, Racks, and Lockers; Main Building Entrance, Pedestrian Pathways; Paths and Goals, Places to Wait, Promenade, Public Outdoor Room; Seat Spots; Sitting Wall, pp. 61-78;
- Policy 12: Northeast Central Design Area, particularly 13th Avenue Axis, pp. 107 & 89, Onyx Street Axis, pp. 108-109, and the Promenade, p. 109.

A summary of related committee comments from prior meetings is provided on page 4 of this mailing.

Action: The committee is being asked to determine if the proposed schematic design for the follow-up items related to the Erb Memorial Union Expansion and Renovation Project are consistent with the *Campus Plan* and to formulate a recommendation to the president.

Please contact this office if you have questions.

- cc. Vicki Arbeiter, Geological Sciences (Columbia & Volcanology Bldg Mgr)  
RaDonna Aymong, Environmental Studies (Columbia Bldg Mgr)

Mike Andreasen, University Advancement  
Vince Babkirk, Campus Ops  
Patrick Bartlein, Geography (Columbia Bldg Mgr)  
Gwen Bolden, DPS  
Jane Brubaker, Campus Ops  
Carolyn Burke, Eugene Planning  
Linda Campbell, Linguistics (Straub Bldg Mgr)  
Kathy Cashman, Geological Sciences (Volcanology Bldg Mgr)  
Timothy Cohalan, EMU Craft Center  
Darin Dehle, Campus Ops  
Sam Dotters-Katz, ASUO  
Dan Geiger, Outdoor Program  
Larry Gilbert, Cameron McCarthy  
Keith Gonzalez, Biology, Willamette Bldg Mgr  
Terri Harding, Eugene Planning  
Jill Hartz, JSMA  
George Helbling, Psychology (Straub Bldg Mgr)  
Terrence Heldreth, EMU Craft Center  
Diane Hoffman, EMU  
Dave Hubin, President's Office  
Karen Hyatt, Community Relations  
Natasha Koiv, SERA  
Harlan Lefevre, Physics (Volcanology Bldg Mgr)  
Gus Lim, Housing  
Carolyn McDermed, UOPD  
Garrick Mishaga, Campus Ops  
Martina Oxoby, CPRE  
Eric Philips, SERA  
David Strom, Physics (Volcanology Bldg Mgr)  
Walker Templeton, SERA  
Fred Tepfer, CPRE  
Dana Winitzky, EMU  
Laurie Woodward, EMU

**Attachment**  
**EMU Expansion and Renovation Project**

The following is a compilation of prior committee members' comments and suggestions related to the follow-up items (April 25, 2013 CPC meeting):

1. Ensure that equal attention is paid to both the building and the landscape. Make the landscape design intentional; resolve open spaces that appear left over and carefully assess ways to enhance landscape elements, especially along the north side of the building (from the building façade to 13<sup>th</sup> Avenue). Carefully link the landscape design to the building design; consider as one piece.
2. Carefully consider ways to ensure that the lower entrance and landscaped area on the north side of the building does not feel like the back of the building or become an unwelcoming dark and damp area. Ensure there are clear views and welcoming access point for all from 13th Avenue; ensure that the space between the street edge and the building does not become too cluttered and feel blocked (e.g., with bike parking).
3. Recognize the importance of the 13th Avenue sidewalk. Ensure it is inviting and designed to accommodate pedestrian traffic traveling east/west.
4. Look for ways to further activate the south-facing outdoor spaces (e.g., add covered outdoor seating areas similar to the Living Learning Center, integrate balconies, and consider deciduous trees for shading).
5. Carefully consider the interconnections of the EMU project, the SRC project, and the Straub Hall projects. Show how they all work together.

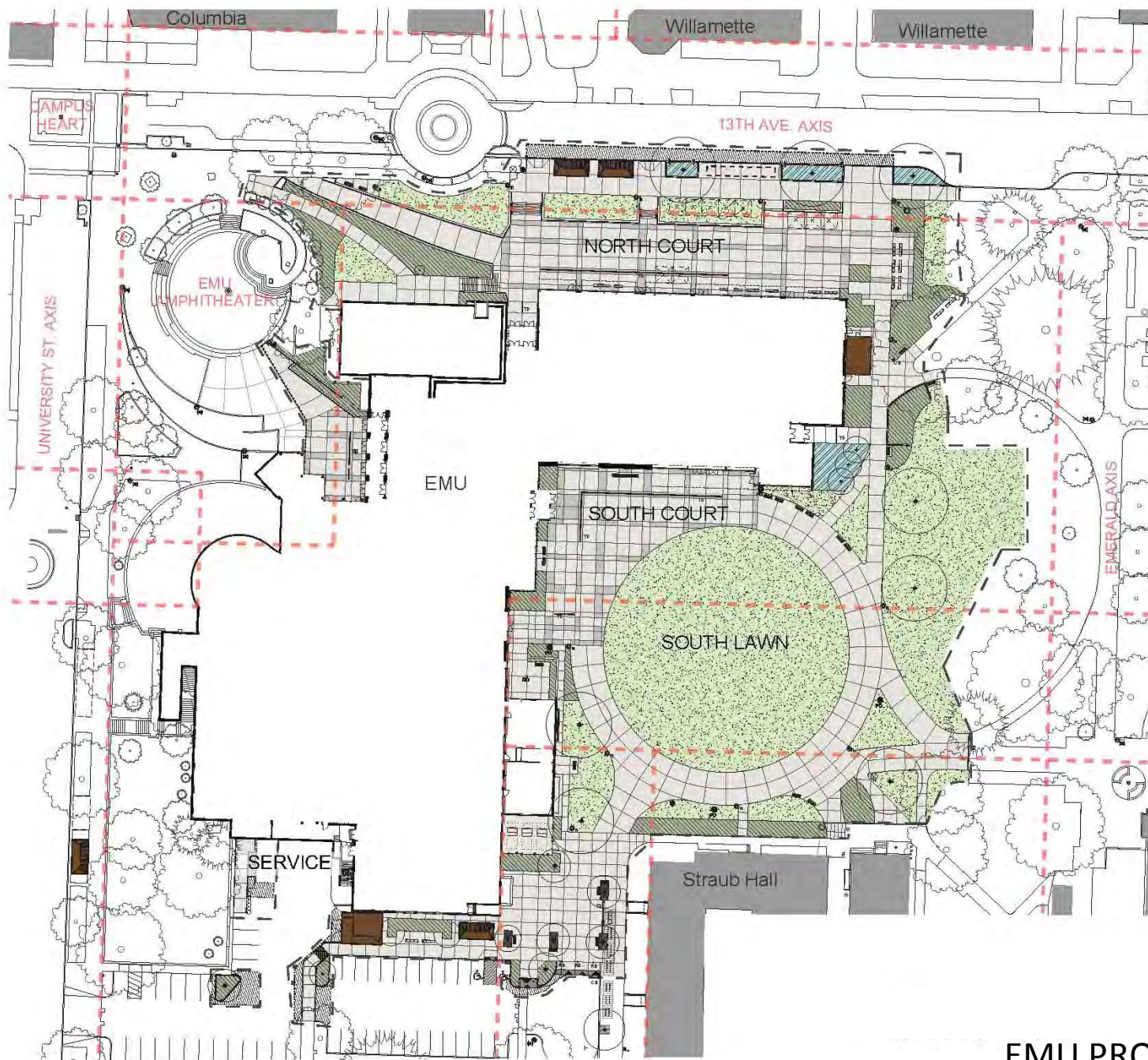
Erb Memorial Union Expansion and Renovation Project  
Schematic Design Follow Up  
November 18, 2013

The following are items for the Campus Planning Committee's review and action:

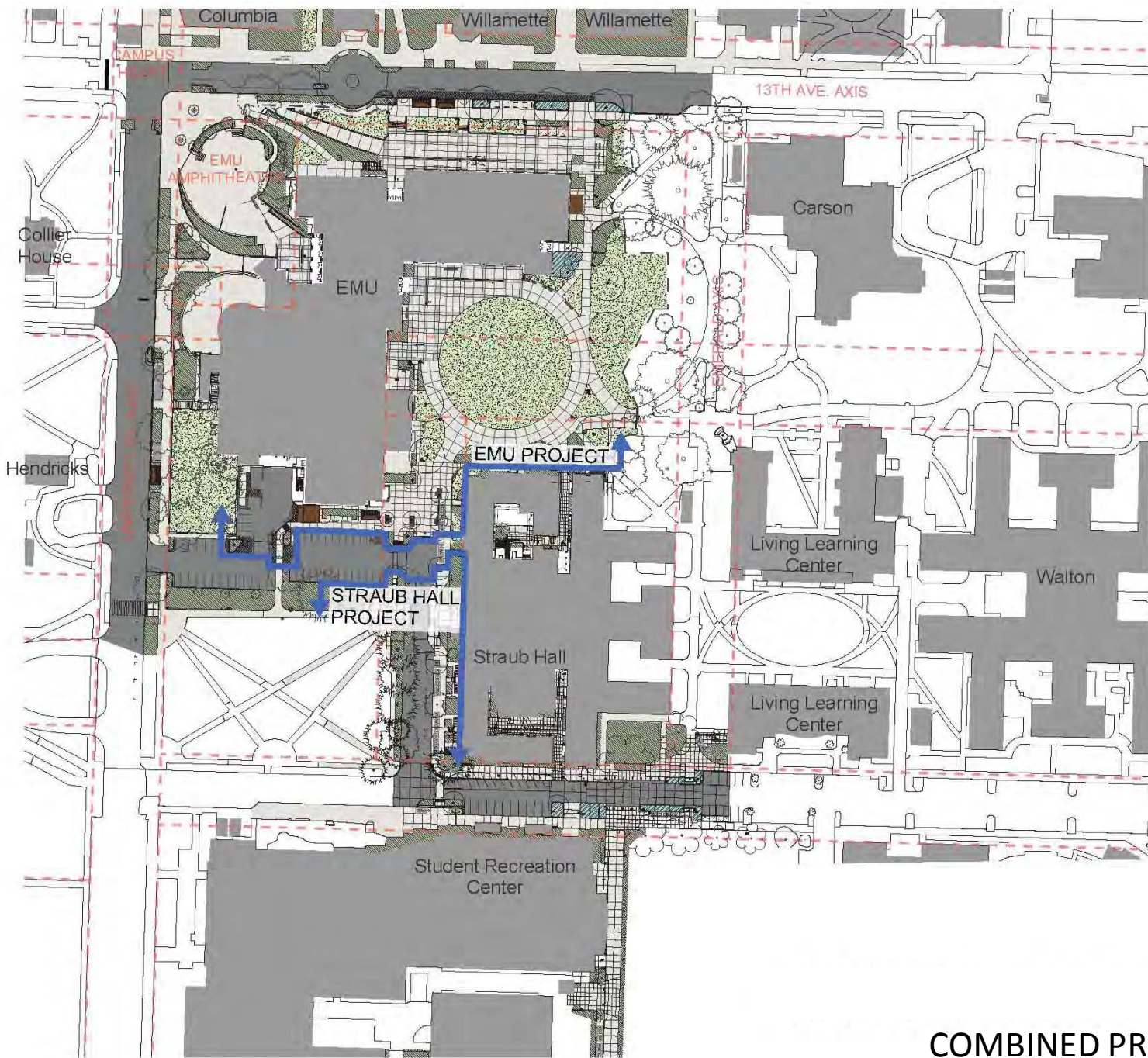
1. Refine the design of the covered bike parking facilities.
2. Refine the design of additional built landscape features (e.g. seat walls, stormwater planters, etc.) if any.
3. Carefully consider the design and materials for the Craft Center Courtyard outer fencing to ensure it is not "prison-like" in appearance. Consider materials other than metal mesh that are more consistent with other applications on campus, for example vertical metal fencing (similar to historic applications, e.g., at Dad's Gates and modern applications, e.g., at Powell Plaza), particularly for areas in public view.

In addition, the following items have been modified since June and will need the committee's review and action:

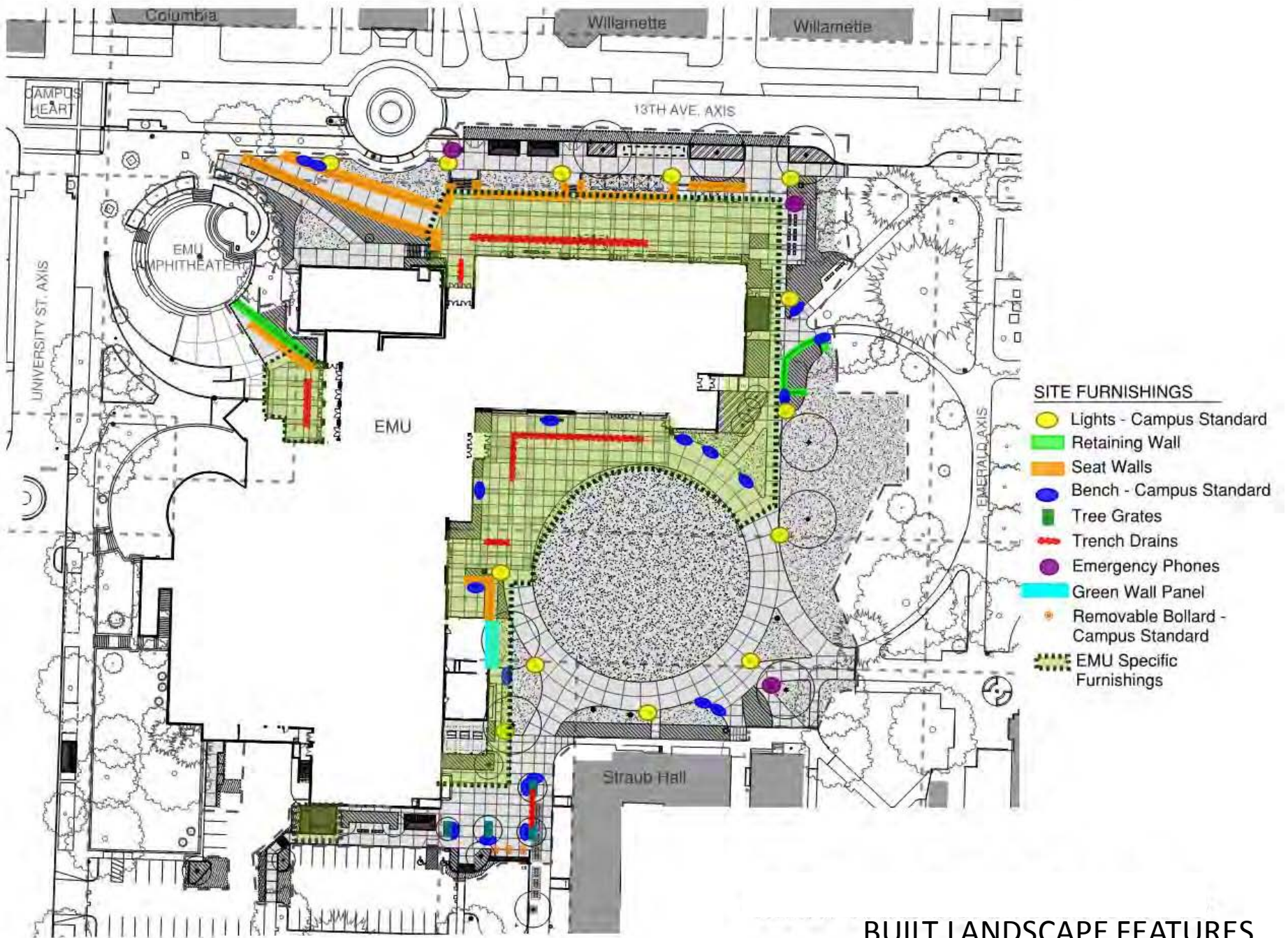
4. Relocated the US flagpole in the vicinity of its current location at the Amphitheater.
5. Changed the size, proportion, and roof coverage of the Craft Center's outdoor courtyard.



EMU PROPOSED SITE PLAN



COMBINED PROJECT SITE PLAN

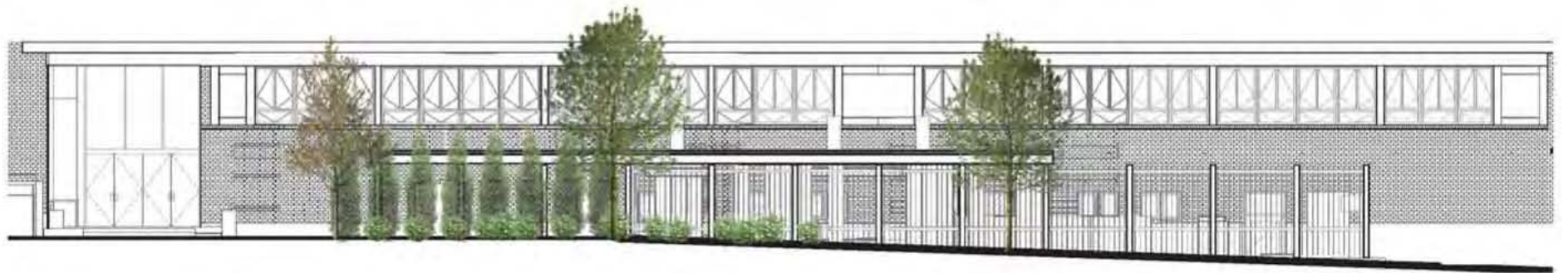


BUILT LANDSCAPE FEATURES

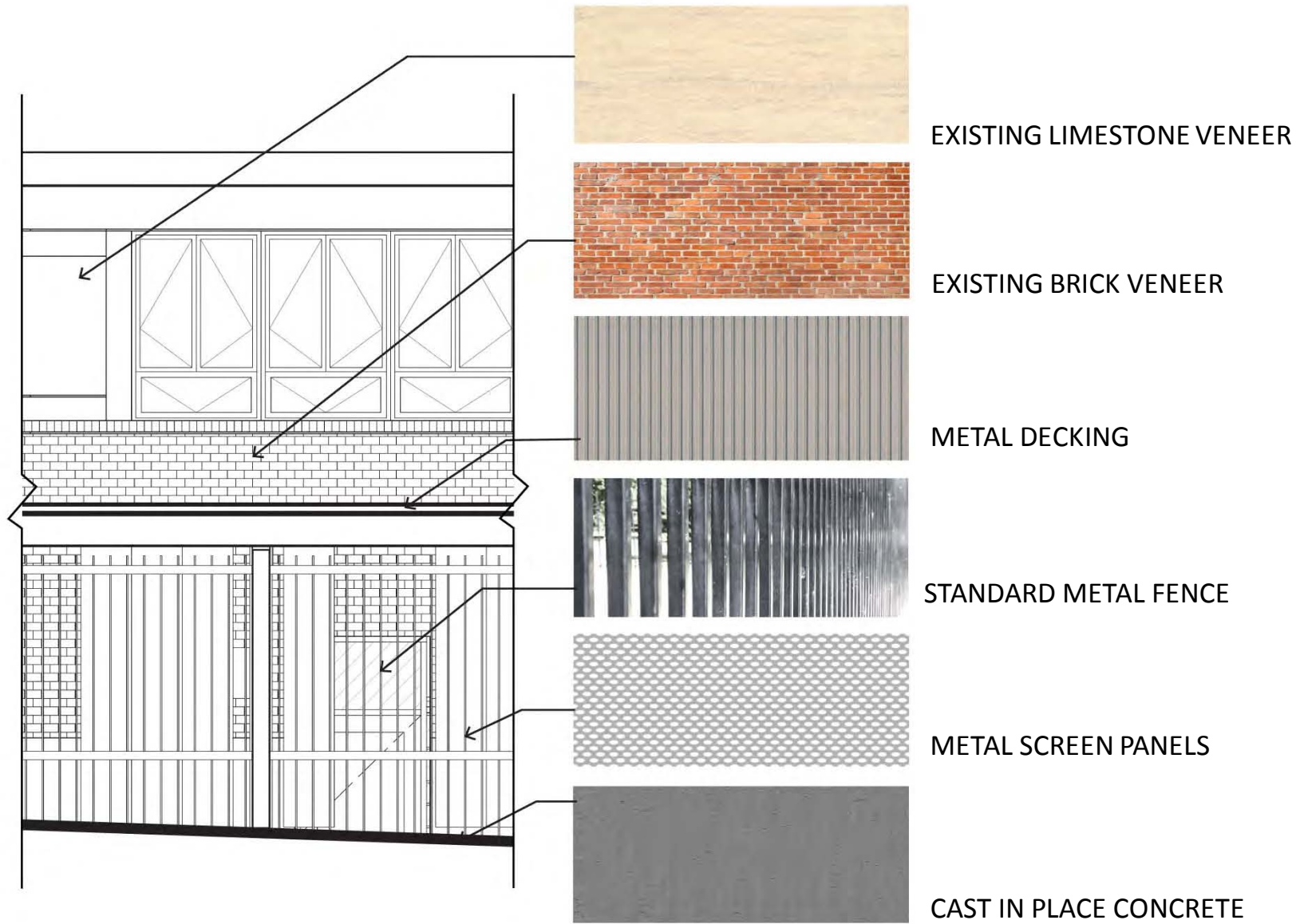




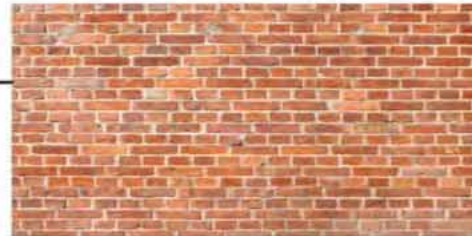
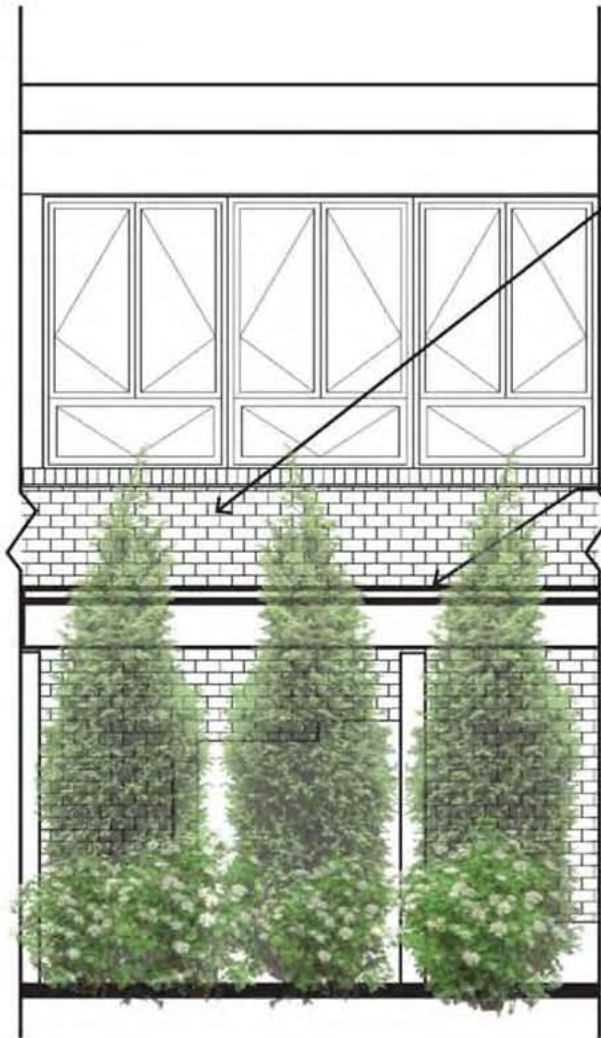
PROPOSED OUTDOOR CRAFT CENTER



PROPOSED OUTDOOR CRAFT CENTER ELEVATION



PROPOSED OUTDOOR CRAFT CENTER ELEVATION



EXISTING BRICK VENEER

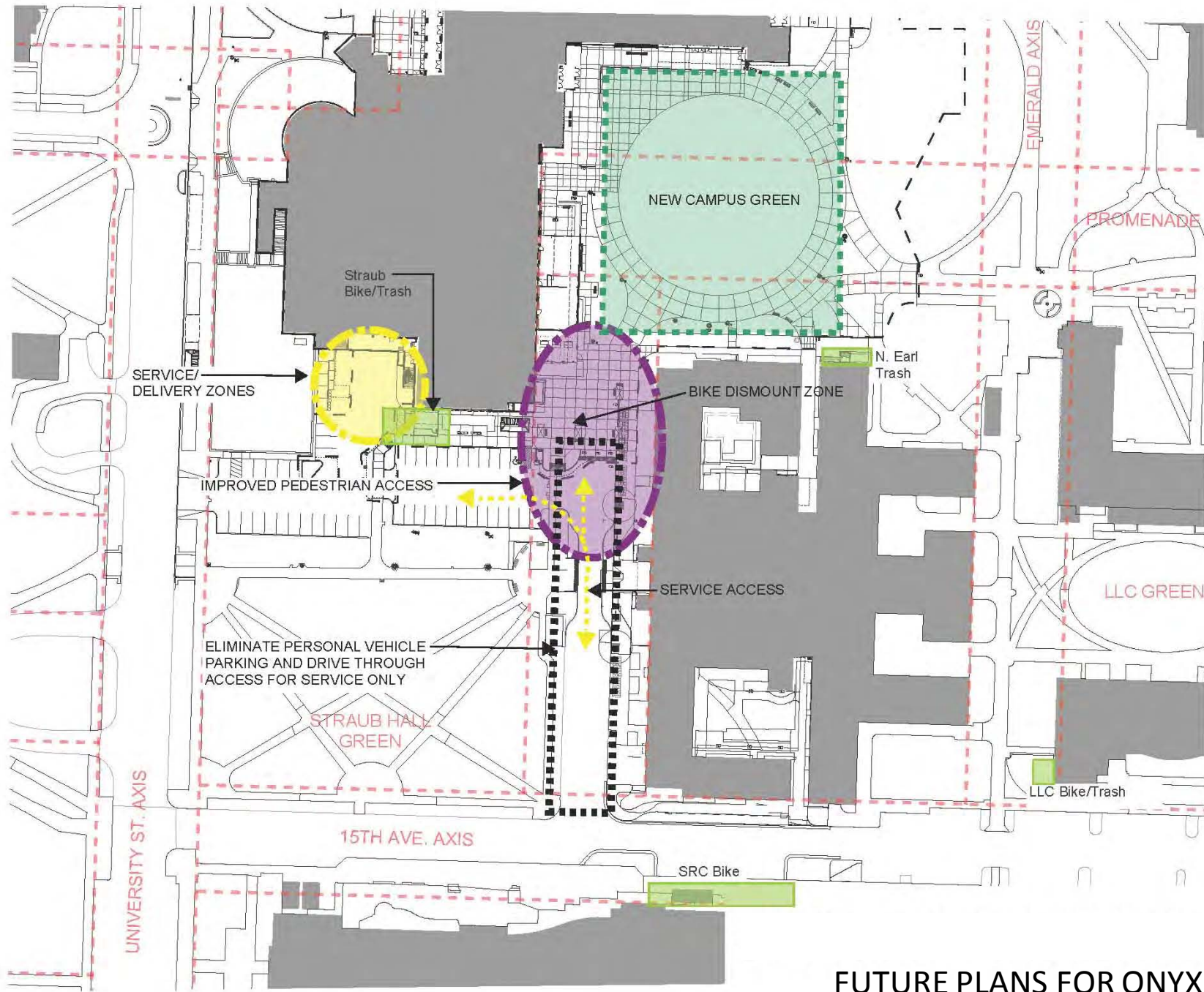


METAL DECKING



THUJA OCCIDENTALIS

PROPOSED OUTDOOR TRANSFORMER ELEVATION



FUTURE PLANS FOR ONYX STREET



APPROACH FROM ONYX AXIS